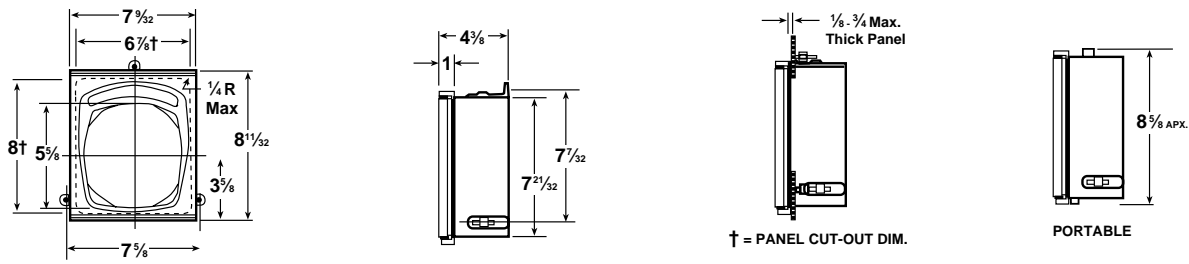
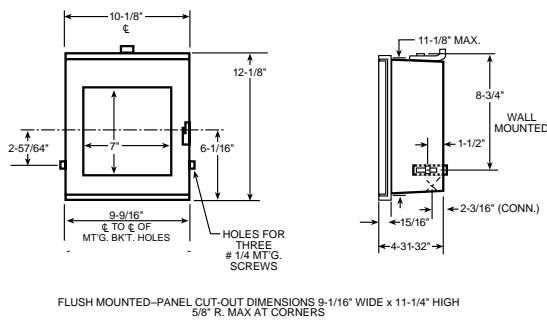


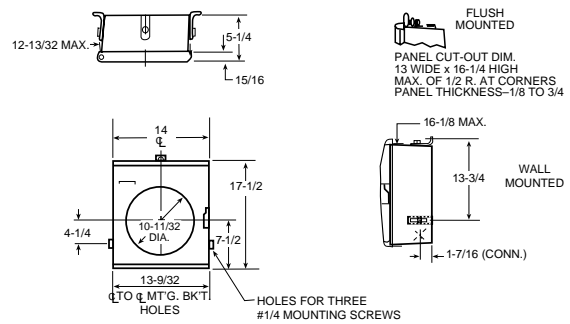
6" Recorder Case Dimensions



8" Recorder Case Dimensions



10" & 12" Recorder Case Dimensions



Charts For Temperature Recorders

Chart Size	Period of Revolution	Chart No.	Range	Divs.	Charts Gas F	c
6 Inch	24-Hour	W-150 + 100-6* Rev.	-150 to 100°	5°	✓	✓
		W370-130-6	-130 to 370°	10°	✓	✓
		W120-30-6	-30 to 120°	2°	✓	✓
		W120-20-6	-20 to 120°	5°	✓	✓
		W60-0-6	0 to 60°	1°	✓	✓
		W100-0-6	0 to 100°	2°	✓	✓
		W200-0-6	0 to 200°	5°	✓	✓
		W300-0-6	0 to 300°	5°	✓	✓
		W180 + 30-6	30 to 180°	5°	✓	✓
	7-Day	W7-150 + 100-6* Rev.	-150 to 100°	5°	✓	✓
		W7-100 + 38-6* Rev.	-100 to 38°	2°	✓	✓
		W7-60-40-6	-40 to 60°	2°	✓	✓
		W7-120-20-6	-20 to 120°	5°	✓	✓
		W7-38-17-6	-17 to 38°	1°	✓	✓
		W7-60-0-6	0 to 60°	1°	✓	✓
		W7-100-0-6	0 to 100°	2°	✓	✓
		W7-200-0-6	0 to 200°	5°	✓	✓
		W7-300-0-6	0 to 300°	5°	✓	✓
8 Inch	24-Hour	W40 + 80-8* Rev.	-40 to 80°	2°	✓	✓
		W110-40-8	-40 to 110°	2°	✓	✓
		W100-20-8	-20 to 100°	2°	✓	✓
		W60-0-8	0 to 60°	1°	✓	✓
		W100-0-8	0 to 100°	2°	✓	✓
		W120-0-8	0 to 120°	2°	✓	✓
		W150-0-8	0 to 150°	2°	✓	✓
		W200-0-8	0 to 200°	5°	✓	✓
		W250-0-8	0 to 250°	5°	✓	✓
		W300-0-8	0 to 300°	5°	✓	✓
		W500-0-8	0 to 500°	10°	✓	✓
	7 Day	W1000-0-8	0 to 1000°	20°	✓	✓
		W7-40 + 80-8* Rev.	-40 to 80°	2°	✓	✓
		W7-110-40-8	-40 to 110°	2°	✓	✓
		W7-30 + 70-8* Rev.	-30 to 70°	2°	✓	✓
		W7-40-10-8	-10 to 40°	1°	✓	✓
		W7-110-10-8	-10 to 110°	2°	✓	✓
		W7-110-10-8 1/2**	-10 to 110°	2°	✓	✓
W7-50-0-8	0 to 50°	1°	✓	✓		
W7-60-0-8	0 to 60°	1°	✓	✓		
W7-80-0-8 1/2**	0 to 80°	2°	✓	✓		
W7-100-0-8	0 to 100°	2°	✓	✓		
W7-100-0-8**	0 to 100°	2°	✓	✓		
200-50-8**	{ 0 to 100° }	3°	✓	✓		
W7-120-0-8	0 to 120°	2°	✓	✓		
W7-150-0-8	0 to 150°	2°	✓	✓		
W7-300-0-8	0 to 300°	5°	✓	✓		
W7-500-0-8	0 to 500°	10°	✓	✓		

*Reverse graduations, i.e. lowest point in range at outer edge of chart.

**1/2" diameter hole.

✓Charts Available.

††Combination temperature and pressure chart.

NOTE: REORDER CHARTS ONLY (WITHOUT RECORDER) FROM GRAPHIC CONTROLS. USA: 1-800-669-1535; CANADA 1-800-267-9498; INTERNATIONAL 1-716-847-7582.

Chart Size	Period of Revolution	Chart No.	Range	Divs.	Charts Gas F	C
10 Inch	24-Hour	W70-70-10	-70 to 70°	2°	✓	✓
		W110-40-10	-40 to 110°	2°	✓	✓
		W-30 + 70-10* Rev.	-30 to 70°	1°	✓	✓
		W120-30-10	-30 to 120°	2°	✓	✓
		W100-20-10T	-20 to 100°	1°	✓	✓
		30-0-100P††	{ 30"-0-100# }	2" & 1#		
		W40-10-10	-10 to 40°	1°		✓
		W60-0-10	0 to 60°	1°		✓
		W80-0-10	0 to 80°	1°		✓
		W100-0-10	0 to 100°	✓	✓	✓
		W200-0-10	0 to 200°	2°	✓	✓
		W250-0-10	0 to 250°	2°	✓	✓
		W300-0-10	0 to 300°	5°	✓	✓
		W400-0-10	0 to 400°	5°	✓	✓
		W500-0-10	0 to 500°	5°	✓	✓
		W800-0-10	0 to 800°	10°	✓	✓
		W1000-0-10	0 to 1000°	10°	✓	✓
		W20 + 120-10* Rev.	20 to 120°	1°	✓	✓
	W230 + 30-10	30 to 230°	2°	✓	✓	
	W400 + 50-10	50 to 400°	5°	✓	✓	
	W500 + 50-10	50 to 500°	5°	✓	✓	
	W600 + 100-10	100 to 600°	5°	✓	✓	
	7-Day	W7-100 + 26-10* Rev.	-100 to 26°	2°	✓	✓
		W7-260-40-10AP†	-40 to 260°	5°	✓	✓
		W7-70-30-10	-30 to 70°	1°	✓	✓
		W7-30 + 70-10* Rev.	-30 to 70°	1°	✓	✓
		W7-120-30-10	-30 to 120°	2°	✓	✓
		W7-60-0-10	0 to 60°	1°	✓	✓
		W7-100-0-10	0 to 100°	1°	✓	✓
		W7-110-0-10	0 to 110°	1°	✓	✓
W7-150-0-10		0 to 150°	2°	✓	✓	
W7-200-0-10		0 to 200°	2°	✓	✓	
W7-250-0-10T		{ 0 to 250° }	5°	✓	✓	
30-0-250P††		{ 30"-0-250# }	10" & 5#			
W7-300-0-10	0 to 300°	5°	✓	✓		
W7-400-0-10	0 to 400°	5°	✓	✓		
W7-800-0-10	0 to 800°	10°	✓	✓		
W7-230 + 30-10	30 to 230°	2°	✓	✓		
31-Day	W31-60-0-10	0 to 60°	1°	✓	✓	
12 Inch	24-Hour	W110-40-12	-40 to 110°	2°	✓	✓
		W40 + 110-12* Rev.	-40 to 110°	2°	✓	✓
		W-30 + 70-12* Rev.	-30 to 70°	1°	✓	✓
		W120-30-12	-30 to 120°	2°	✓	✓
		W110-10-12	-10 to 110°	1°	✓	✓
		W50-0-12	0 to 50°	1°	✓	✓
		W100-0-12	0 to 100°	1°	✓	✓
		W-0+100-12* Rev.	0 to 100°	1°	✓	✓
		W350-700-12P	{ 350 to 700 Kgcm² }	5 Kgcm²		
		50-100-12T††	{ 50 to 100° }	1°		✓
		W150-0-12	0 to 150°	2°	✓	✓
		W200-0-12	0 to 200°	2°	✓	✓
		W300-0-12	0 to 300°	2°	✓	✓
		W400-0-12	0 to 400°	5°	✓	✓
		W600-0-12	0 to 600°	10°	✓	✓
		W1000-0-12	0 to 1000°	10°	✓	✓
		W230 + 30-12	30 to 230°	2°	✓	✓
		W150 + 50-12	50 to 150°	1°	✓	✓
	W230 + 120-12	120 to 230°	1°	✓	✓	
	W300 + 100-12T	{ 100 to 300° }	1/5#	✓	✓	
	15-0-12P††	{ 0 to 15# }	1/5#			
	W700 + 300-12	300 to 700°	5°	✓	✓	
	7-Day	W7-100 + 80-12* Rev.	-100 to 80°	2°	✓	✓
		W7-150-100-12	-100 to 150°	2°	✓	✓
		W7-60 + 40-12* Rev.	-60 to 40°	1°	✓	✓
		W7-40 + 80-12* Rev.	-40 to 80°	1°	✓	✓
		W7-30 + 50-12* Rev.	-30 to 50°	1°	✓	✓
		W7-30 + 70-12* Rev.	-30 to 70°	1°	✓	✓
		W7-120-30-12	-30 to 120°	2°	✓	✓
		W7-30 + 120-12T††	{ -30 to 120° }	2°	✓	✓
120-0-12P		{ 0 to 120# }	2#			
W7-80-0-12		0 to 80°	1°	✓	✓	
W7-100-0-12		0 to 100°	1°	✓	✓	
W7-120-0-12		0 to 120°	1°	✓	✓	
W7-150-0-12	0 to 150°	2°	✓	✓		
W7-150-0-12T	{ 0 to 150°F }	2°	✓	✓		
50-0-12P††	{ 0 to 50 }	1#				
W7-200-0-12	0 to 200°	2°	✓	✓		
W7-300-0-12	0 to 300°	2°	✓	✓		
W7-1000-0-12	{ 0 to 1000°F }	10°	✓	✓		
500-0-12	{ 0 to 500°F or C }	5°	✓	✓		
W7-90 + 10-12	10 to 90°	1°	✓	✓		
W7-120 + 20-12	20 to 120°	1°	✓	✓		
W7-130 + 30-12	30 to 130°	1°	✓	✓		
W7-230 + 30-12	30 to 230°	2°	✓	✓		
W7-150 + 40-12	40 to 150°	2°	✓	✓		
31-Day	W31-20 + 120-12* Rev.	-20 to 120°	2°	✓	✓	
W31-110-10-12	-10 to 110°	1°	✓	✓		
W31-300-0-12	0 to 300°	2°	✓	✓		
W31-150 + 50-12	50 to 150°	1°	✓	✓		

*Reverse graduations, i.e. lowest point in range at outer edge of chart.

**1/2" diameter hole.

✓Charts Available.

†Ammonia Vapor pressure equivalent (2 color chart)

††Combination temperature and pressure chart.

NOTE: REORDER CHARTS ONLY (WITHOUT RECORDER) FROM GRAPHIC CONTROLS. USA: 1-800-669-1535; CANADA 1-800-267-9498; INTERNATIONAL 1-716-847-7582.