

STANDARD FEATURES

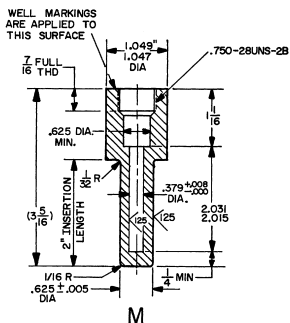
- To Latest Specification MIL 1-17244E (Ships)
- Vibration Resistant to MIL STD 167D
- Shock Resistant to MIL S-901C
- All Stainless Steel Construction
- External Recalibration Adjustment
- Dished Anti-Parallax Dial
- Accurate to $\pm 1\%$ of Scale Range
- All Models Listed Below Have Been Approved by NAVSEA
- $\frac{3}{4}$ "-28 UN2A Union Connection Assembly
Must be used with Well (or Bushing).

CATALOG NUMBER	NATIONAL STOCK NUMBER (NSN)	STEM LENGTH	RANGE °F	FORM
E318A2	6685-00-782-5244	2"	-40/180	Back
E31802	6685-00-782-5230	2"	-40/180	Bottom
E318A4	6685-00-782-5231	4"	-40/180	Back
E31804	6685-00-782-5232	4"	-40/180	Bottom
E318A4R3*	6685-00-239-6679	4"	-40/180	Back
E324A2	6685-00-782-5249	2"	20/240	Back
E32402	6685-00-782-5247	2"	20/240	Bottom
E324A4	6685-00-782-5236	4"	20/240	Back
E32404	6685-00-782-5234	4"	20/240	Bottom
E324A4R3*	6685-00-404-3715	4"	20/240	Back
E355A4	6685-00-841-1439	4"	50/550	Back
E35504	6685-00-066-6102	4"	50/550	Bottom

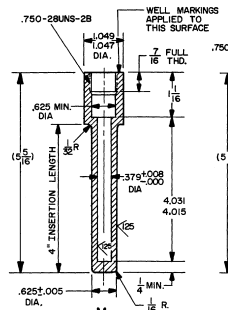
*THESE CATALOG NUMBERS (WITH "R3" AT END) ARE NAVY TYPE "ITM" WITH BOTH MAXIMUM AND MINIMUM INDICATING HANDS (RESETABLE). ALL OTHERS ARE NAVY TYPE "ITD" WITHOUT MAXIMUM AND MINIMUM INDICATING HANDS.

THERMOWELLS TO SPECIFICATION MIL-T-24270B (SHIPS)

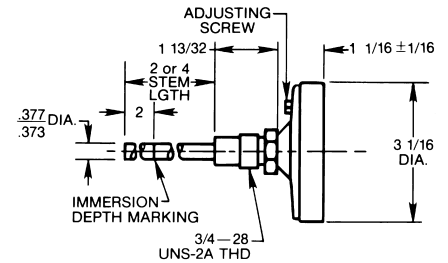
MIL T-24270B WELL NO.	THERMOMETER STEM LENGTH	WELL LENGTH (OVERALL)	CATALOG NO.		
			PHOS. BRONZE	COPPER NICKEL	316 SS
MIL-T-24270/1B(SH)	2"	3 $\frac{5}{16}$ "	T4R4	T4C4	T4F4
MIL-T-24270/3B(SH)	4"	5 $\frac{5}{16}$ "	T6R5	T6C5	T6F5



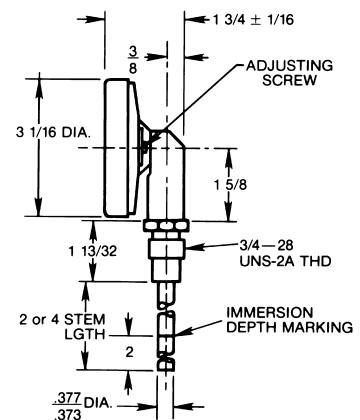
MIL-T-24270/1B(SH)



MIL-T-24270/3B(SH)



FORM "A"
BACK CONNECTION



FORM "O"
BOTTOM CONNECTION

HOW TO ORDER

SPECIFY COMPLETE CATALOG NUMBER FROM ABOVE TABLE.