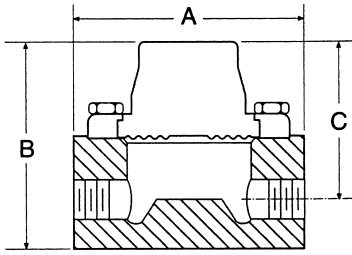


## In-Lined Threaded – 1/4, 1/2, 3/4, 1 NPT

MODEL NUMBER D19-11

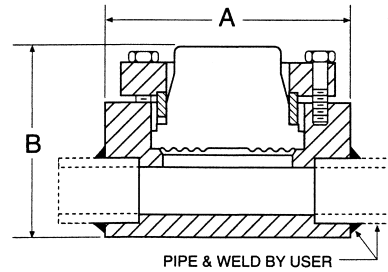


PROCESS CONNECTION	A		B		C	
	in	mm	in	mm	in	mm
1/4 NPT	4	(102)	2 <sup>5</sup> / <sub>8</sub>	(67)	2 <sup>5</sup> / <sub>8</sub>	(54)
1/2 NPT			3 <sup>5</sup> / <sub>8</sub>	(92)	2 <sup>3</sup> / <sub>4</sub>	(70)
3/4 NPT			3 <sup>7</sup> / <sub>8</sub>	(98)	3	(76)
1 NPT			3 <sup>7</sup> / <sub>8</sub>	(98)	3	(76)

## In-Lined Welded –

1/4", 1/2", 3/4", 1, 1 1/2", 2" Socket Weld

MODEL NUMBER D19-13

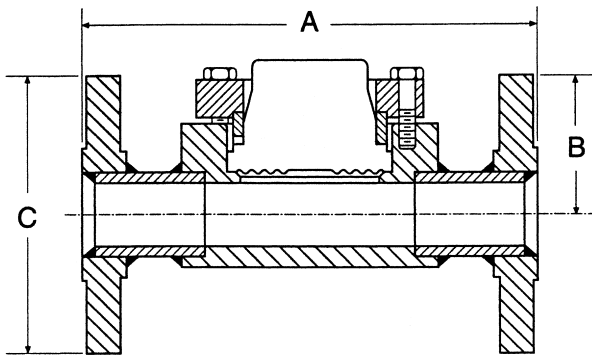


PIPE SIZE	A		B	
	in	mm	in	mm
1/4"	4	(102)	2 <sup>11</sup> / <sub>32</sub>	(60)
1/2", 3/4"			2 <sup>1</sup> / <sub>32</sub>	(60)
1"			2 <sup>15</sup> / <sub>32</sub>	(63)
1 1/2"			2 <sup>23</sup> / <sub>32</sub>	(69)
2"			2 <sup>3</sup> / <sub>32</sub>	(75)

## In-Lined Flanged – 1/2", 1", 1 1/2", 2", 3"

ANSI Raised Face Type

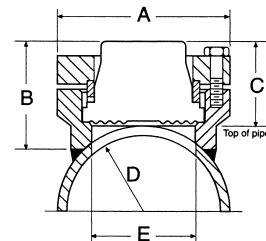
MODEL NUMBER D19-14



FLANGE SIZE	RATING #	A		B		C	
		in	mm	in	mm	in	mm
1/2"	150	7	(178)	2 <sup>7</sup> / <sub>16</sub>	(62)	3 <sup>1</sup> / <sub>2</sub>	(89)
	300	7	(178)	2 <sup>7</sup> / <sub>16</sub>	(62)	3 <sup>3</sup> / <sub>8</sub>	(98)
1"	150	7	(178)	2 <sup>7</sup> / <sub>16</sub>	(62)	4 <sup>1</sup> / <sub>4</sub>	(108)
	300	8	(203)	2 <sup>7</sup> / <sub>16</sub>	(62)	4 <sup>7</sup> / <sub>8</sub>	(123)
1 1/2"	150	8	(203)	2 <sup>11</sup> / <sub>16</sub>	(68)	6	(127)
	300	9	(229)	2 <sup>11</sup> / <sub>16</sub>	(68)	6 <sup>1</sup> / <sub>8</sub>	(155)
2"	150	9	(229)	2 <sup>15</sup> / <sub>16</sub>	(75)	6	(152)
	300	10	(254)	2 <sup>15</sup> / <sub>16</sub>	(75)	6 <sup>1</sup> / <sub>2</sub>	(165)
3"	150	11	(279)	3 <sup>5</sup> / <sub>8</sub>	(92)	7 <sup>1</sup> / <sub>2</sub>	(229)
	300	12	(305)	3 <sup>5</sup> / <sub>8</sub>	(92)	8 <sup>1</sup> / <sub>4</sub>	(254)

## Saddle – 3" Pipe Only

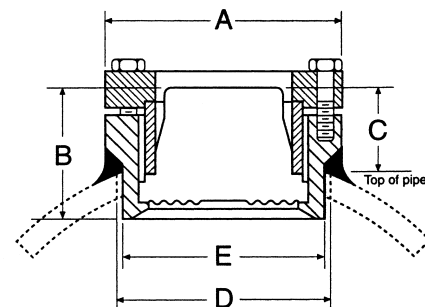
MODEL NUMBER D19-103



A		B		C		D		E	
in	mm	in	mm	in	mm	in	mm	in	mm
3 1/2"	(89)	2 1/4"	(57)	1 1/8"	(48)	1 1/4"	(44)	2 1/8"	(54)

## Saddle – 4" Pipe and Larger

MODEL NUMBER D19-104



A		B		C		D		E	
in	mm	in	mm	in	mm	in	mm	in	mm
3 1/2"	(89)	1 <sup>15</sup> / <sub>16</sub> "	(50)	1 <sup>3</sup> / <sub>16</sub> "	(31)	3	(76)	2 <sup>31</sup> / <sub>32</sub> "	(75)

To Order Items on This Page: Refer to Page 48.