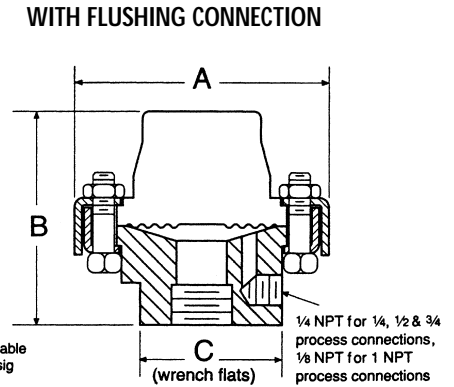
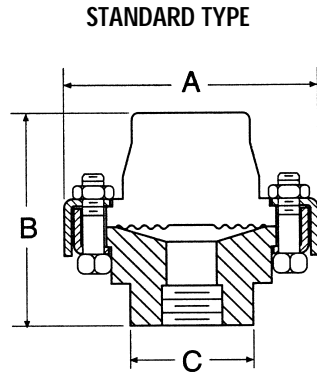


**1/4, 1/2, 3/4 or 1 NPT  
Process Connections**

**To Order:**  
Refer to page 48.

DIAPHRAGM	MODEL NUMBERS	
	STANDARD TYPE	WITH FLUSHING CONNECTION
Welded or Bonded	D19-2	D19-7
Clamped	DT-2	DT-7



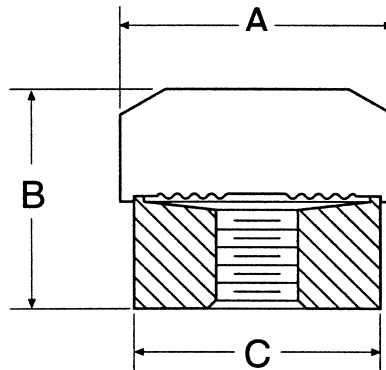
Note: not available above 2500 psig

A		B		C	
in	mm	in	mm	in	mm
3/4	(95)	2 7/8	(73)	1 13/16	(46)

**Low Cost Mini Seal  
1/4 or 1/2 NPT  
Process Connections**

**MODEL NUMBER D19-M**

The compact mini-seal allows it to fit into space-restricted areas and is designed to protect transducers, mini-switches, and 3 1/2" or smaller dial size pressure gauges from corrosion, plugging or freeze-up. All welded metal construction prevents leakage of process media. It is rated for 2500 psi at 100°F and has a 316L stainless steel top housing, diaphragm and lower housing.



**Note:**  
Available only with 1/4 NPT gauge connection.  
For gauges with 3 1/2" dial size or smaller only.

A		B		C	
in	mm	in	mm	in	mm
1 1/2	(38)	1 3/16	(30)	1 11/32	(34)

**To Order:**  
Simply specify "D19-M" and process connection size.