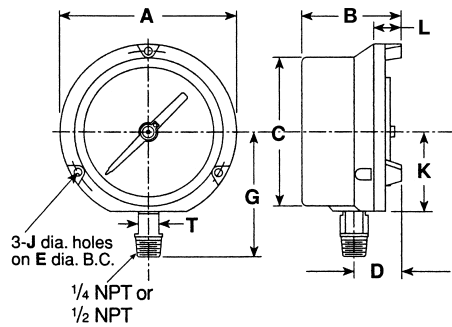


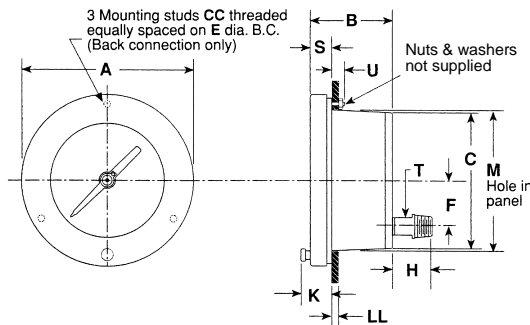
Test Gauge Case Styles

For TA1 And TA2 Series Gauges Only – Page 26



CASE STYLE "4"

Dial Size Inches	A	B	C	D	E	G	J	K	L	M	T
4 1/2	5 1/8 (48)	3 3/8 (87)	4 7/8 (124)	1 1/8 (41)	5 7/8 (137)	3 1/8 (94)	.218	2 1/8 (67)	1 1/8 (27)	-	5/8 (16)
6	7 3/8 (194)	3 1/2 (89)	6 3/8 (162)	1 1/8 (41)	7 (178)	4 1/8 (113)	.218	2 3/8 (67)	2 3/8 (27)	-	1 1/8 (16)



CASE STYLE "6"

Dial Size Inches	A	B	C	E	F	H	K	L	M	S	T	U	CC	LL
4 1/2	6 7/8 (155)			5 7/8 (137)					4 7/8 (124)				#10-24	
6	7 7/8 (192)	2 7/8 (73)	4 3/4 (121)	7 (178)	1 1/8 (41)	1 1/8 (35)	1 1/2 (34)	1/8 (3)	6 1/2 (165)	5/8 (16)	5/8 (16)	3/4 (19)	1/4-20 (3)	1/2 to 1/2 (13)

Millimeters shown in ().

Both styles solid front safety type with blow-out back cover.

Either style is standard on test gauges.

Style 4 is back flanged type for direct or surface mounting. Available with bottom connection only. Glass retaining ring is threaded polypropylene.



CASE STYLE 4

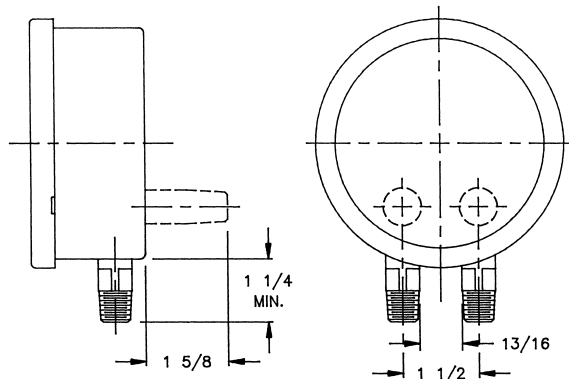
Style 6 is hinged front type for flush panel mounting. Available with rear (back) connection only. Glass retaining ring is black enameled steel, hinged type.



CASE STYLE 6

STYLE	DIAL SIZE(S)	MATERIAL
4	4 1/2" and 6"	Aluminum
6		Black Textured Enamel Finish

Typical Connections For Duplex Or Differential Gauges



AVERAGE SHIPPING WEIGHTS FOR GAUGES

DIAL SIZE	CASE MATERIAL	
	ALUMINUM	PLASTICS
3 1/2"	1 lb. 7 oz.	N.A.
4 1/2"	2 lb. 6 oz.	2 lb. 2 oz.
6"	3 lb. 7 oz.	N.A.
8 1/2"	4 lb. 14 oz.	4 lb. 12 oz.

NOTE: ALL DIMENSIONS ARE APPROXIMATE.