

For Royal and Regal Gauges Only

## FLUSH PANEL MOUNT TYPES

### Flanged Ring Type For Full Flush Mounting

Style 5 is solid front safety type with blow-out back cover.

Style E is open front type with rubber blow-out disc at rear.

Both styles have threaded glass retaining rings with flange.

Style E is standard on 12" dial size gauges (Model AA49 – page 13).

Styles 5 or E optional for all other dial size Royal or Regal gauges.

Note: Style 5 was formerly style 4F.

Style E was formerly style AF.

Rear (back) connections are recommended.

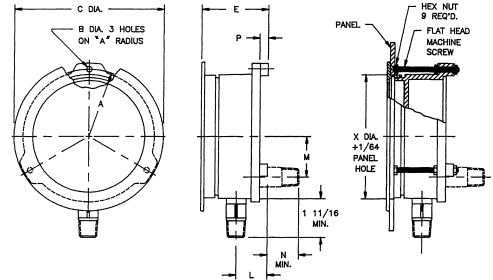
Bottom connection is also available.



STYLE	DIAL SIZE(S)	MATERIAL
5	3½"-4½"-6"-8½"	Aluminum
E	3½"-4½"-6"-8½"-12"	Black Textured Enamel Finish

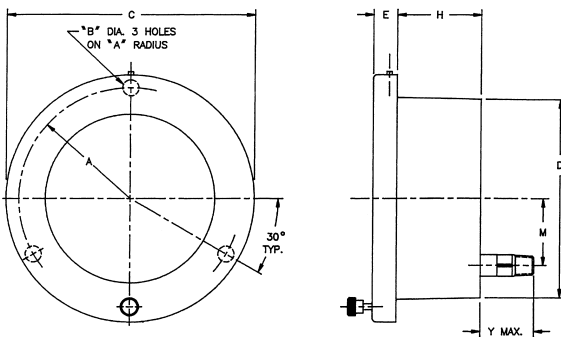
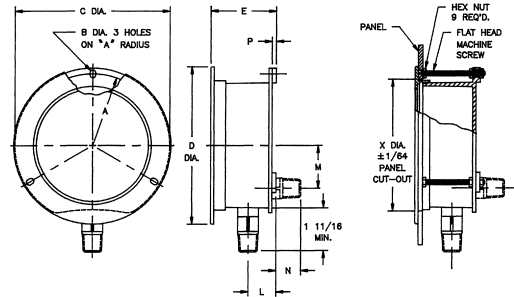
### DIMENSIONS FOR STYLE "5" CASES

GAUGE SIZE	A	B	C	E	L	M	N	P	X	SCREW SIZE
3½"	INCH	2½	7/32	4 15/16	2½	1 1/16	1¼	5/16	4	10-32 x 2½
	MM	54	6	125	67	21	27	32	8	102
4½"	INCH	2 11/16	7/32	6	2¾	1 1/16	1 5/16	1 5/16	5	10-32 x 2½
	MM	68	6	152	70	27	41	24	8	127
6"	INCH	3½	9/32	7¾	2½	1	1 5/8	1 11/16	¼	¼-20 x 2½
	MM	89	7	197	64	25	41	43	6	165
8½"	INCH	4 13/16	9/32	10 3/8	2 7/16	1	2 1/8	1 1/16	¼	¼-20 x 2½
	MM	122	7	264	65	25	54	27	6	229



### DIMENSIONS FOR STYLE "E" CASES

GAUGE SIZE	A	B	C	D	E	L	M	N	P	X	SCREW SIZE
3½"	INCH	2 5/16	7/32	5	4 15/16	2	7/8	1 1/16	1 1/16	¼	10-32 x 2½
	MM	56	6	127	125	51	22	30	27	3	102
4½"	INCH	2 11/16	7/32	5 5/8	6	2 1/16	1 1/16	1 5/8	3/16	5	10-32 x 2½
	MM	68	6	149	152	62	27	41	41	5	127
6"	INCH	3½	9/32	7 5/8	7¾	2 1/16	1	1 5/8	2 1/8	3/16	¼-20 x 2½
	MM	89	7	194	197	62	25	40	54	5	165
8½"	INCH	4 13/16	9/32	10 7/8	10 5/8	2 5/16	1	2 1/8	1 1/16	¼	¼-20 x 2½
	MM	122	7	257	264	59	25	54	27	2	229
12"	INCH	6¾	9/32	14 3/8	14 3/8	2 13/16	1 3/16	2 1/8	1 1/8	1/8	12 11/16
	MM	171	7	365	365	71	30	54	29	3	319



### Hinged Front Type For Flush Mounting

Style 6 is solid front safety type with blow-out back cover.

Style W is open front type with rubber blow-out disc at rear.

Both styles have molded hinged front that allows easy access to dial and pointer.

Available only with rear (back) connections.

Optional For Royal and Regal gauges.



GAUGE SIZE	A	B	C	D	E	H	M	X	Y	
4½"	INCH	2 11/16	3/16	6 7/16	4 7/8	5/8	2	1 5/8	4 15/16	1 1/16
	MM	68	5	157	124	16	51	41	125	40
6"	INCH	3½	3/16	7 13/16	6 5/8	5/8	1 3/4	1 5/8	6 7/16	1 13/16
	MM	89	5	198	168	16	44	41	164	46

X-PANEL HOLE CUT-OUT DIAMETER

NOTE: ALL DIMENSIONS ARE APPROXIMATE.

STYLE	DIAL SIZE(S)	MATERIAL
6	4½" and 6"	Aluminum
W		Black Textured Enamel Finish

For Royal and Regal Gauges Only  
**Flush Panel Mount Types (continued)**



**Front Flanged Type For Semi-Flush Mounting**

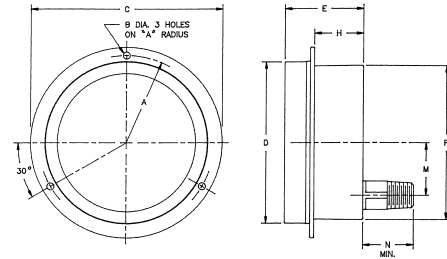
Both styles are open front type with rubber blow-out disc at rear.

Style B has Bayonet type glass retaining ring.

Style H has chrome like slip ring for retaining glass.

Both styles are optional for Royal or Regal Gauges.

Available with rear (back) connection only.



GAUGE SIZE		A	B	C	D	E	F	H	M	N	X
3 1/2"	INCH	2 1/4	1/4	4 15/16	4 1/8	2	3 13/16	1 1/32	1 1/16	1 13/16	3 15/16
	MM	57	6	125	105	51	97	26	27	46	100
4 1/2"	INCH	2 11/16	1/4	5 7/8	5	2 1/4	4 3/4	1 1/2	1 5/8	1 13/16	4 7/8
	MM	68	6	149	127	57	121	38	41	46	124
6"	INCH	3 1/2	9/32	7 7/16	6 1/2	2 7/16	6 3/16	1 1/16	1 5/8	1 13/16	6 7/16
	MM	89	7	192	165	62	157	37	41	46	160

X-PANEL HOLE CUT-OUT DIAMETER

STYLE	DIAL SIZE(S)	MATERIAL
B	3 1/2"-4 1/2"-6"	Aluminum
H	8 1/2" Only	Black Textured Enamel Finish



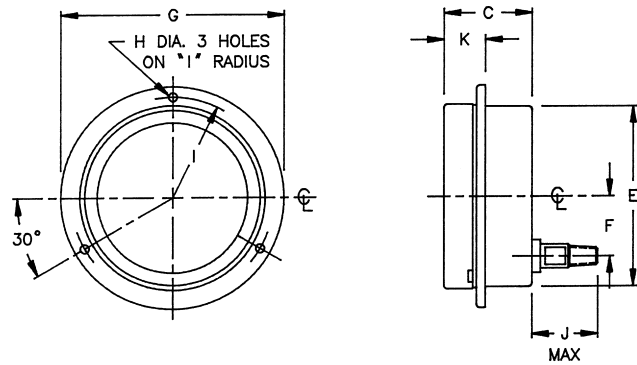
**Front Flanged Type For Semi-Flush Mounting**

Open front type with rubber blow-out disc at rear.

Bayonet type glass retaining ring.

Optional for 3 1/2" or 4 1/2" Royal or Regal gauges.

Available only with rear (back) connection.



GAUGE SIZE		C	E	F	G	H	I	J	K
3 1/2"	INCH	1 1/8	3 3/8	1 1/8	5 3/16	7/32	2 1/8	1 1/8	1 11/16
	MM	41	92	28	132	6	54	48	17
4 1/2"	INCH	2 1/8	4 7/16	1 1/8	5 15/16	7/32	2 11/16	1 1/8	1 13/16
	MM	54	116	41	151	6	68	48	21

STYLE	DIAL SIZE(S)	MATERIAL
V	3 1/2" and 4 1/2"	Stainless Steel (300 Series)



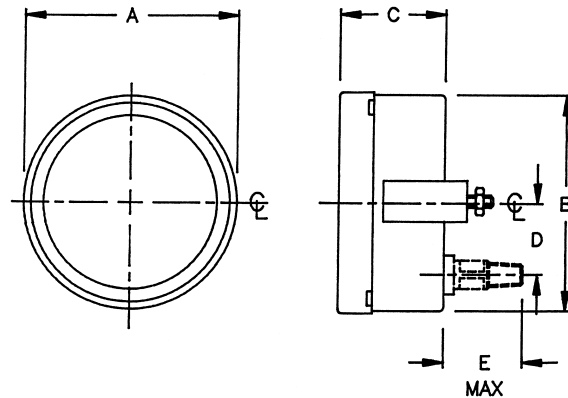
**U-Clamp Type For Flush Mounting**

Open front type with rubber blow-out disc at rear.

Bayonet type glass retaining ring.

Optional for 3 1/2" Royal or Regal gauges.

Available only with rear (back) connection.



GAUGE SIZE		A	B	C	D	E1	E2
3 1/2"	INCH	4	3 3/8	1 1/8	1 1/8	1 1/8	2
	MM	102	92	41	28	41	51

\*RECOMMENDED PANEL CUT OUT IS 3 3/4"

STYLE	DIAL SIZE(S)	MATERIAL
U	3 1/2" Only	Stainless Steel (300 Series)

NOTE: ALL DIMENSIONS ARE APPROXIMATE.