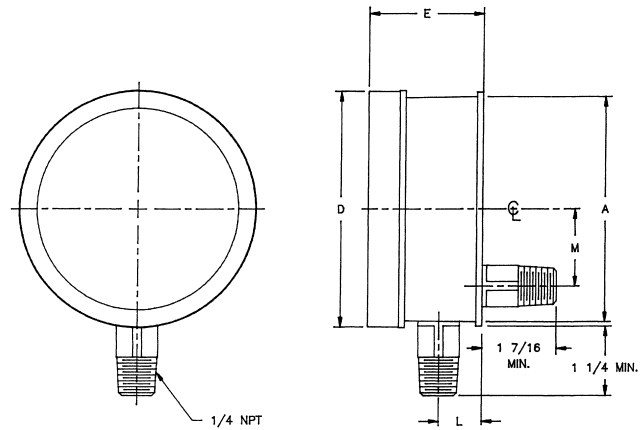


For Royal and Regal Gauges Only  
Direct Mount Types (Flangeless Case)



Open front type with rubber blow-out disc at rear.  
Glass retaining ring is Bayonet type on Style C and chrome like slip ring on Style "I".  
Optional on Royal or Regal Gauges.



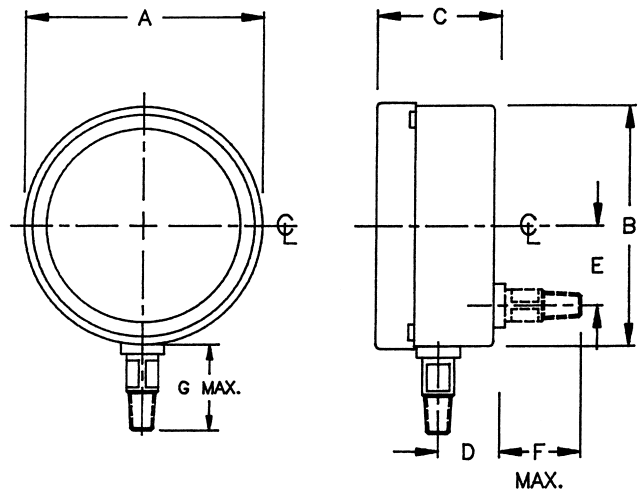
STYLE	DIAL SIZE(S)	MATERIAL
C	3½" - 4½" - 6"	Aluminum
I	8½" Only	Black Textured Enamel Finish

GAUGE SIZE	A	RING-D		E	L	M
		BAY'NT	SLIP			
3½	INCH	3⅞	4⅞	2	1⅞	1⅞
	MM	98	105	51	17	27
4½	INCH	4⅝	5	2⅞	7⅞	1⅞
	MM	125	127	60	22	41
6	INCH	6⅞	6½	2⅞	7⅞	2⅞
	MM	164	165	62	22	54
8½	INCH	8⅞	8¾	2¼	1⅝	2⅞
	MM	219	222	57	24	54

Case Styles



Case Style Y is open front type with rubber blow-out disc at rear.  
Case Style 8 is solid front safety type with blow-out back cover.  
Both styles have Bayonet type glass retaining ring.  
Both styles are optional for Royal or Regal gauges.



STYLE 8 IS ONLY AVAILABLE ON BOTTOM CONNECTED SIMPLEX GAUGES

STYLE	DIAL SIZE(S)	MATERIAL
Y	3½" and 4½"	Stainless Steel
8	4½" Only	Steel (300 Series)

GAUGE SIZE	A	B	C	D	E	F	G
3½	INCH	3⅝	3⅞	1⅞	⅞	1⅞	1⅞
	MM	100	92	41	14	27	43
4½	INCH	4⅞	4⅞	2⅞	¾	1⅞	1⅞
	MM	124	116	56	19	41	51

NOTE: ALL DIMENSIONS ARE APPROXIMATE.