

For Royal and Regal Gauges Only

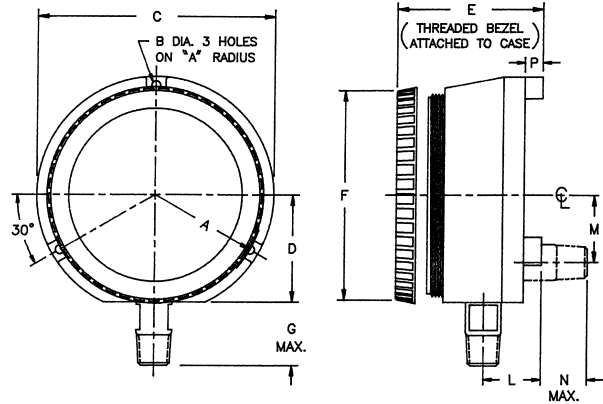
Direct or Surface Mount Types



Solid front safety type case with blow-out back cover and threaded type glass retaining ring.

Standard on 4½" dial size Royal gauges.

Can be liquid filled or hermetically sealed. Refer to pages 6-11 inclusive.



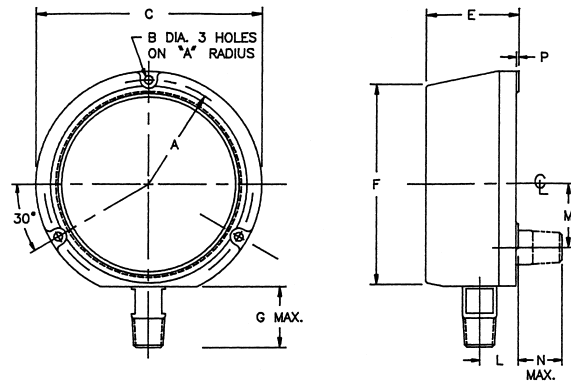
STYLE	DIAL SIZE(S)	MATERIAL
2	4½" Only	Polypropylene

GAUGE SIZE	A	B	C	D	E	F	G	L	M	N	P	
4½	INCH	2 <sup>11</sup> / <sub>16</sub>	¼	5 <sup>13</sup> / <sub>16</sub>	2 <sup>5</sup> / <sub>8</sub>	2 <sup>5</sup> / <sub>16</sub>	5 <sup>5</sup> / <sub>16</sub>	1 <sup>7</sup> / <sub>16</sub>	1 <sup>1</sup> / <sub>16</sub>	1 <sup>1</sup> / <sub>8</sub>	1 <sup>1</sup> / <sub>4</sub>	7 <sup>1</sup> / <sub>16</sub>
	MM	68	6	148	67	75	130	40	37	41	32	11



Style "P" is open front type with rubber blow-out disc at rear and snap-in glass retaining ring. Standard on 4½" dial size Regal gauges.

Style "2" is solid front safety type with blow-out back cover and snap-in glass retaining ring. Standard on 8½" dial size gauges.



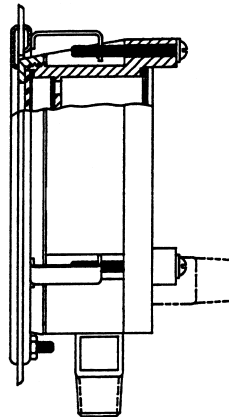
STYLE	DIAL SIZE(S)	MATERIAL
P	4½" Only	Polypropylene
2	8½" Only	Phenol

GAUGE SIZE	A	B	C	E	F	G	L	M	N	P	
4½	INCH	2 <sup>11</sup> / <sub>16</sub>	¼	5 <sup>13</sup> / <sub>16</sub>	2 <sup>7</sup> / <sub>16</sub>	5 <sup>5</sup> / <sub>16</sub>	1 <sup>7</sup> / <sub>16</sub>	1 <sup>5</sup> / <sub>16</sub>	1 <sup>5</sup> / <sub>8</sub>	1 <sup>1</sup> / <sub>4</sub>	1 <sup>1</sup> / <sub>16</sub>
	MM	68	6	148	62	129	40	24	41	44	2
8½	INCH	4 <sup>11</sup> / <sub>16</sub>	¾	10 <sup>1</sup> / <sub>4</sub>	2 <sup>5</sup> / <sub>16</sub>	9	1 <sup>1</sup> / <sub>2</sub>	1 <sup>1</sup> / <sub>4</sub>	2 <sup>1</sup> / <sub>8</sub>	1 <sup>5</sup> / <sub>16</sub>	5 <sup>1</sup> / <sub>16</sub>
	MM	122	8	260	75	229	38	44	54	24	8

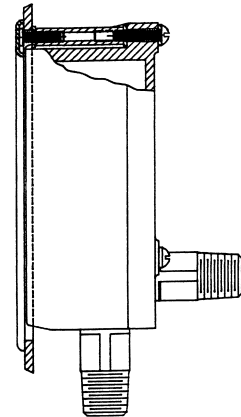
FLUSH MOUNTING RING KITS FOR STYLE "2" OR "P" CASES

CATALOG NUMBER	FOR USE WITH	PANEL CUT-OUT DIAMETER
TR45PY	4½" "2" Case	6.000"
TR45	4½" "P" Case	5.675"
TR85	8½" "2" Case	10.000"

Kit consists of flush mounting ring plus necessary hardware for mounting (screws, washers, spacer posts).



TR45PY



TR45/TR85

NOTE: ALL DIMENSIONS ARE APPROXIMATE.

For Royal and Regal Gauges Only

## Direct or Surface Mount Types (continued)

Case Style 4 is solid front safety type with blow-out back cover. Glass retaining ring is Bayonet Type for 3½" and 4½" dial sizes; Threaded Type for 6" and 8½" dial sizes. Optional for Royal or Regal gauges.

Case Style A is open front type with rubber blow-out disc at rear. Glass retaining ring is Bayonet Type. Standard on 3½" and 6" Royal or Regal gauges, optional for 4½" size.

Case Style G is open front type with rubber blow-out disc at rear. Glass retaining ring is chrome like slip ring. Optional for 8½" dial size Royal or Regal gauges.



STYLE	DIAL SIZE(S)	MATERIAL
4	3½"-4½"-6-8½"	Aluminum
A	3½"-4½"-6"	Black Textured
G	8½" Only	Enamel Finish

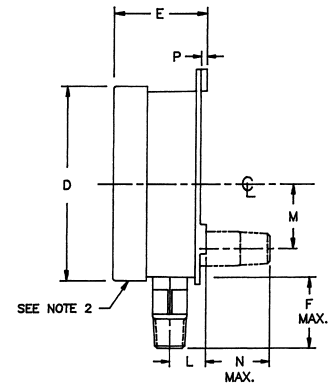
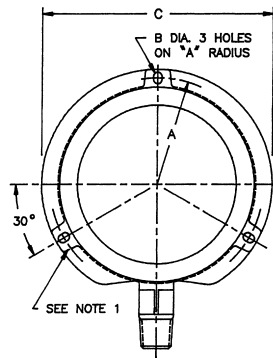
### DIMENSIONS FOR STYLE "4" CASES

Gauge Size	A	B	C	D	E	F	L	M	N	P
3½" ①	INCH	2½	7/32	4¼	4¼	1¼	1½	1¼	7/8	5/16
	MM	64	6	121	105	44	33	32	27	8
4½" ①	INCH	2½	3/16	5½	4½	2½	1¼	1½	1½	5/16
	MM	68	5	149	125	71	44	29	41	8
6" ②	INCH	3½	7/32	7¾	6½	2½	1½	1	1½	3/16
	MM	89	6	194	164	62	43	25	41	5
8½" ②	INCH	4½	¼	10¼	8½	2½	1½	1	3½	3/16
	MM	122	6	260	227	64	43	25	84	5

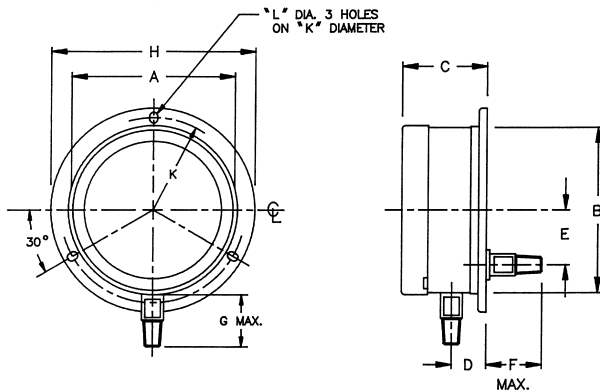
NOTES: 1. CASE WILL HAVE A PARTIAL BACK FLANGE (3½" AND 4½" CASE)  
2. FRONT RING WILL BE THREADED (6" AND 8½" CASE)

### DIMENSIONS FOR STYLE "A" OR "G" CASES

Gauge Size	A	B	C	D	E	F	L	M	N	P
3½"	INCH	2½	3/16	5	4	2½	1½	1¾	1½	1/8
	MM	64	5	127	102	52	43	21	27	3
4½"	INCH	2½	3/16	5½	4½	2½	1½	1	1½	1/8
	MM	68	5	149	125	62	43	25	41	3
6"	INCH	3½	¼	7¾	6½	2½	1½	1½	1½	1/8
	MM	90	6	194	164	64	41	27	41	3
8½"	INCH	4½	¼	10¼	8½	2½	1½	1¾	1½	1/16
	MM	122	6	260	227	59	43	24	54	2



Case Styles



Open front type with rubber blow-out disc at rear. Glass retaining ring is Bayonet type. Optional for 3½" or 4½" dial size Royal or Regal gauges.



Gauge Size	A	B	C	D	E	F	G	H	K	L
3½"	INCH	3½	3/8	1¾	1½	1¾	1½	5/16	4¾	7/32
	MM	100	92	41	17	27	48	49	132	6
4½"	INCH	4¾	4/16	2½	1¾	1¾	1½	6	5¾	7/32
	MM	124	116	59	22	41	48	49	152	6

STYLE	DIAL SIZE(S)	MATERIAL
X	3½" and 4½"	Stainless Steel (300 Series)

NOTE: ALL DIMENSIONS ARE APPROXIMATE.