

For Royal and Regal Gauges Only

	OPTION CODE		OPTION CODE
Plastic Lens	PD	Maximum Indicating Hand	EP*
Shatterproof Glass	SG	Minimum Indicating Hand	EQ*
Movable Red Set Hand	SH	Maximum and Minimum Indicating Hands (2)	73*
Throttle Screw	TS	Paper Tag Attached To Instrument	NN
Overpressure Stop	OS	Stainless Steel Tag Attached By Wire	NH
Vacuum stop	VS	Special Dials (Minimum Quantity Required)	SS
Marking On Dial	DM	Slotted Link For Hydraulic Service	S4

*NOT AVAILABLE ON 12" DIAL SIZE GAUGES.

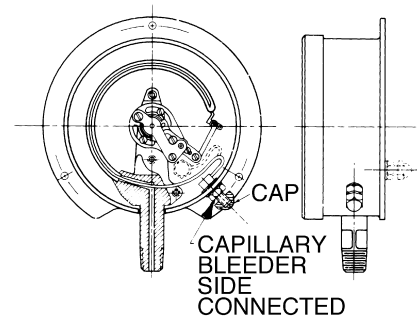
CAPILLARY BLEEDER (Option Code BG)

Weksler gauges can be furnished with a bleeder system which operates through a flexible capillary in the Bourdon tube. This accessory provides for fast and complete removal of air or gases. The external bleed port is protected and sealed by a cap nut.

The bleeder system is especially useful in sealed systems such as solid-filled or diaphragm gauges. The Capillary bleeder feature is also recommended for applications where highest accuracy and sluggish free action are desired.

Type 316 stainless steel (max. pressure 10,000 psi)

NOTE: ONLY AVAILABLE ON GAUGES WITH 316 STAINLESS STEEL BOURDON TUBES



Electric Contacts – 4½" Dial Size Only

STANDARD FEATURES

- High impact polycarbonate enclosure for ambient temperature up to 150°F
- Full scale contact adjustment from front of enclosure
- Available on ranges 30 psi and up
- Magnetically assisted, silver alloy contact
- Accuracy ±2% of scale arc (add to instrument accuracy)
- Rated for ¼ amp, 110 volt AC non-inductive load
- Available in type 2, A, E, X, V, Y cases

The electric contact feature is a switching mechanism actuated by the indicating pointer. Switch points are adjustable and can be set throughout the 270° arc. Contacts are used to activate alarms and relays. (Not recommended for continuous switching).



MODEL	GHSA	GH LDA
DESCRIPTION	Single adjustable contact designed to "make" on the rise.	Double adjustable contact designed to "make" on the rise at the high set point and "make" on the drop at the low set point "off-in-between".
CONNECTION	2' Lead wires exit side of case thru a conduit fitting.	2' Lead wires exit thru fitting in lower portion of enclosure.
WIRING DIAGRAM		