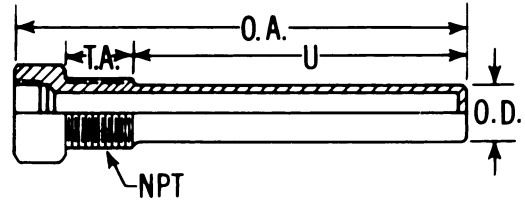


**"5F" Series Thermowells**

(Fits 5/8" O.D. Bulb with 1-20 NEF-2B Swivel Nut)

**WITHOUT LAGGING EXTENSION**

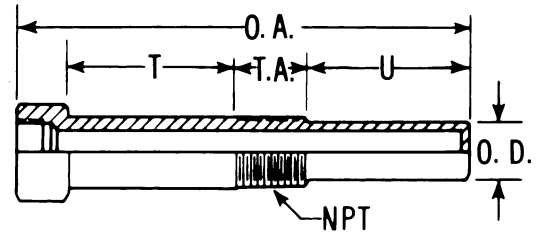
O.A. LENGTH	U DIM.	PART NUMBERS - 3/4 NPT*			
		BRASS	STEEL	304 SS	316 SS
4 1/4	2 1/2	D1E5F2	D3E5F2	D6E5F2	D4E5F2
6 3/4	5	D1M5F2	D3M5F2	D6M5F2	D4M5F2
9 3/4	8	D1S5F2	D3S5F2	D6S5F2	D4S5F2
12 3/4	11	D1T5F2	D3T5F2	D6T5F2	D4T5F2



T.A. = 1"  
O.D. = 27/32"

**WITH LAGGING EXTENSION**

O.A. LENGTH	U DIM.	T DIM.	PART NUMBERS - 3/4NPT*			
			BRASS	STEEL	304 SS	316 SS
6 3/4	2 1/2	2 1/2	D1M5F2E	D3M5F2E	D6M5F2E	D4M5F2E
9 3/4	5 1/2	2 1/2	D1S5F2E	D3S5F2E	D6S5F2E	D4S5F2E
12 3/4	8 1/2	2 1/2	D1T5F2E	D3T5F2E	D6T5F2E	D4T5F2E



\*1 NPT AVAILABLE AT EXTRA COST, CHANGE 6TH DIGIT FROM 2 TO 3.

**Bulb Mounting Bracket**

Used to support Type "A" air temperature bulb; 5" wall clearance provides good air circulation and minimum radiation effect. Nickel plated brass standard. For bulb style "A" only.

