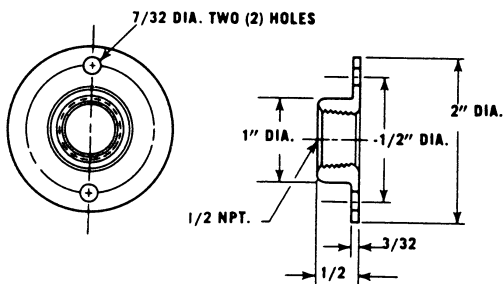


Flanges (2" O.D.) For use in air ducts, dryers, ovens, etc.

1/2 NPT FLANGE

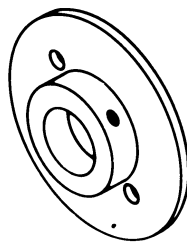
Satin finish chrome plated brass.
For use with bulb style "3" only.



PART NUMBER 2F2

SET SCREW FLANGE

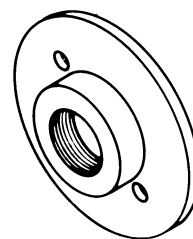
Brass.
For use on plain bulb.
(Style "C" only).



PART NUMBER A12-2

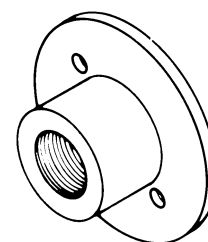
3/4"-24 NS-2 FLANGES

Brass.
For use with Econo-gas.
Bulb styles J, K and N only.



PLAIN FLANGE

PART NUMBER A11-2

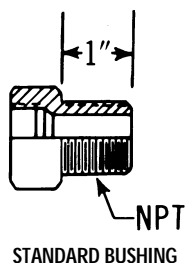


LAGGING EXTENSION FLANGE

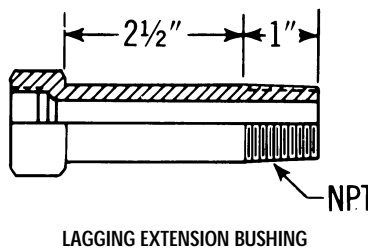
PART NUMBER A13-2

Threaded Bushings

SERIES	INTERNAL THREAD	MALE THREAD	TYPE	PART NUMBER		
				BRASS	304 SS	316 SS
"4B"	3/4"-24 NS-2	1/2 NPT	Standard	D124B1	D624B1	D424B1
			Lagging	D124B1E	D624B1E	D424B1E
"5F"	1"-20 NEF-2B	3/4 NPT	Standard	D145F2	D645F2	D445F2
			Lagging	D145F2E	D645F2E	D445F2E



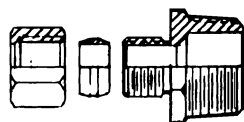
STANDARD BUSHING



LAGGING EXTENSION BUSHING

1/2 NPT Compression Union

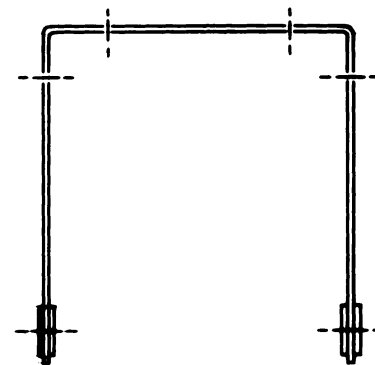
For use on 1/2" O.D. rigid extension plain bulbs.
(Bulb Style "C").



PART NUMBER	THREAD	MATERIAL
1A	1/2 NPT	Brass
1A - SS	1/2 NPT	304 SS

Mounting Bracket

Used to support Type "A" air temperature bulb; 5" wall clearance provides good air circulation and minimum radiation effect. Nickel plated brass standard. For bulb style "A" only.



PART NUMBER A16