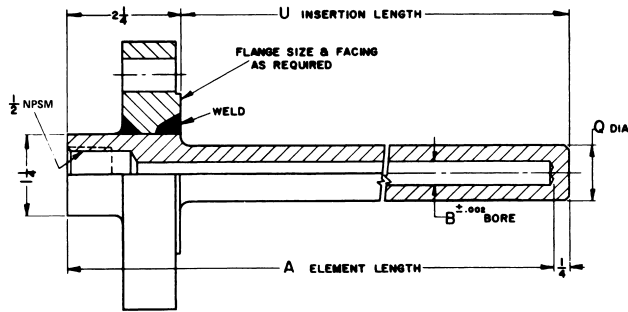
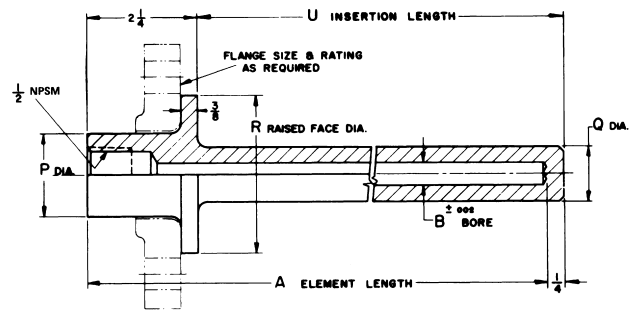


ANSI TYPE



VAN STONE TYPE



CATALOG NUMBERS					
ELEM. LGTH. A	INSERT. LGTH. U	SHANK DIA. Q	STEEL	304 SS	316 SS
4	2	3/4	FAS4	FAG4	FAJ4
6	4	3/4	FAS6	FAG6	FAJ6
9	7	3/4	FAS9	FAG9	FAJ9
12	10	3/4	FAS2	FAG2	FAJ2
15	13	3/4	FAS5	FAG5	FAJ5
18	16	3/4	FAS8	FAG8	FAJ8
24	22	3/4	FAST	FAGT	FAJT

CATALOG NUMBERS					
ELEM. LGTH. A	INSERT. LGTH. U	SHANK DIA. Q	STEEL	304 SS	316 SS
4	2	3/4	VLS4	VLG4	VLJ4
6	4	3/4	VLS6	VLG6	VLJ6
9	7	3/4	VLS9	VLG9	VLJ9
12	10	3/4	VLS2	VLG2	VLJ2
15	13	3/4	VLS5	VLG5	VLJ5
18	16	3/4	VLS8	VLG8	VLJ8
24	22	3/4	VLST	VLGT	VLJT

ANSI flanged dwells are supplied as one unit with flange and well welded together.

Note: When ordering, specify flange size and rating as follows:

1" - 150 psi	1 1/2" - 150 psi	2" - 150 psi
1" - 300 psi	1 1/2" - 300 psi	2" - 300 psi
1" - 600 psi	1 1/2" - 600 psi	2" - 600 psi
1" - 1500 psi	1 1/2" - 1500 psi	2" - 1500 psi

RF (raised face) furnished as standard.

FF (flat face) optional at same price when specified.

RTJ (ring type joint) available at extra cost when specified.

Brass cap and chain available to keep bore clean when not in use.

.260" bore standard. If .385" bore is required: (1) add the letter K to the end of the catalog no. (2) "Q" diameter is changed to 7/8" along the entire length of insertion ("U" dimension).

For pressure and temperature rating use Table 3 below.

Van stone type wells are intended for use with separate carbon steel backing flange (lap joint type).

Note: Backing flange not supplied unless requested. If required, specify flange size and ratings as follows:

1" - 150 psi	1 1/2" - 150 psi
1" - 300 psi	1 1/2" - 300 psi
1" - 600 psi	1 1/2" - 600 psi
1" - 1500 psi	1 1/2" - 1500 psi

TABLE 3
MAXIMUM FLANGE PRESSURE – TEMPERATURE RATING*
(LBS. PER SQ. INCH)

MATERIAL	TEMPERATURE – °F					
	0°	200°	400°	600°	800°	1000° 1125°
Carbon Steel	UP	TO	2500#			
A.I.S.I.-304	UP	TO	2500#			
A.I.S.I.-316	UP	TO	2500#			
Monel	UP	TO	2500#			