

3-2-3% Accuracy – 2½" (63mm) Dial

316 Stainless Steel Bourdon and Socket

This 2½ inch (63mm) Pressure Gauge is an economical, high quality instrument specifically designed for use on original equipment, hydraulic and pneumatic systems, and for a diversity of industrial and commercial applications.

Liquid Filled Gauges Yield Many Benefits

- Dampening effect minimizes pulsations
- Glycerine filling continuously lubricates gauge movement
- Liquid filled gauges are specially suited for adverse environments, i.e., high vibration and corrosive atmospheres.

STANDARD FEATURES

- Polished Stainless Steel Case
- Glycerine Filled
- Stainless Steel Movement
- All Welded Joints
- 1/4 NPT Connections
- Furnished with Throttle Screw (Snubber)
- Plastic Window

CATALOG NUMBERS

CONNECTION LOCATION	BOTTOM	LOWER BACK*
RANGE (psi and kPa)		
30"/0" Vac and 100-0 kPa	BY42YVC4LW	BY42YVC4RW
30"-0-30 psi and 100-0-200 kPa	BY42YCB4LW	BY42YCB4RW
30"-0-60 psi and 100-0-400 kPa	BY42YCC4LW	BY42YCC4RW
30-0-150 psi and 100-0-1000 kPa	BY42YCE4LW	BY42YCE4RW
0-30 psi and 0-200 kPa	BY42YPD4LW	BY42YPD4RW
0-60 psi and 0-400 kPa	BY42YPE4LW	BY42YPE4RW
0-100 psi and 0-700 kPa	BY42YPF4LW	BY42YPF4RW
0-160 psi and 0-1100 kPa	BY42YPG4LW	BY42YPG4RW
0-200 psi and 0-1400 kPa	BY42YPH4LW	BY42YPH4RW
0-300 psi and 0-2100 kPa	BY42YPJ4LW	BY42YPJ4RW
0-600 psi and 0-4200 kPa	BY42YPM4LW	BY42YPM4RW
0-1000 psi and 0-7000 kPa	BY42YPP4LW	BY42YPP4RW
0-2000 psi and 0-14000 kPa	BY42YPS4LW	BY42YPS4RW
0-3000 psi and 0-21000 kPa	BY42YPT4LW	BY42YPT4RW

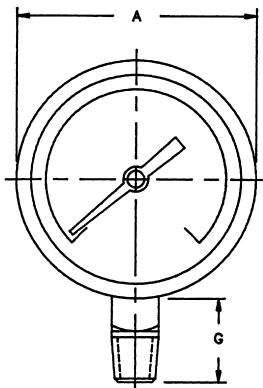
TO ORDER: SPECIFY 10 DIGIT "CATALOG NUMBER" FROM ABOVE TABLE.



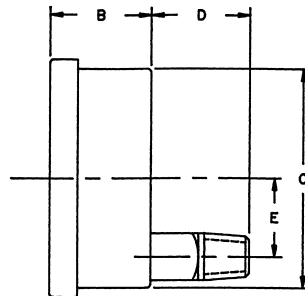
BY42YCB4LW



BY42YPG4RW



BOTTOM CONNECT



LOWER BACK CONNECT

Gauge Size		A	B	C	D	E	G
2½	INCH	2 11/16	1 1/4	2 1/16	1 3/16	3/4	1 3/16
	MM	68	32	62	21	19	21

NOTE: ALL DIMENSIONS ARE APPROXIMATE.