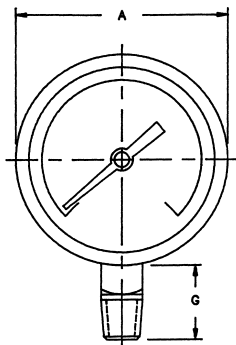




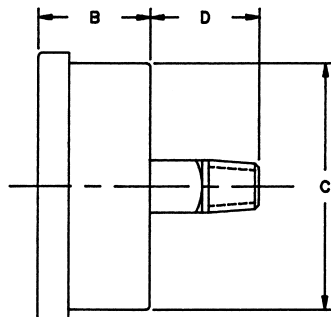
BY12YPV4LW



BY12YPJ4CW



BOTTOM CONNECT



CENTER BACK CONNECT

3-2-3 Accuracy – 2½" (63mm) Dial Size

Bronze Tube and Brass Socket

This 2½ inch (63mm) Pressure Gauge is an economical, high quality instrument specifically designed for use on original equipment, hydraulic and pneumatic systems, and for a diversity of industrial and commercial applications.

Liquid Filled Gauges Yield Many Benefits

- Dampening effect minimizes pulsations
- Glycerine filling continuously lubricates gauge movement
- Liquid filled gauges are specially suited for adverse environments, i.e., high vibration and corrosive atmospheres.

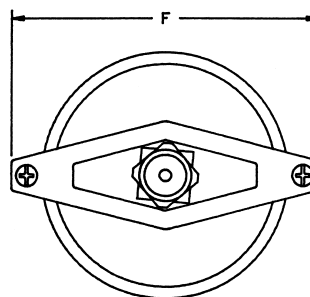
STANDARD FEATURES

- Polished Stainless Steel Case
- Glycerine Filled
- Brass Movement
- Soldered Joints
- 1/4 NPT Connections
- Furnished with Throttle Screw
- Plastic Window

CATALOG NUMBERS

CONNECTION LOCATION	BOTTOM	CENTER BACK*
RANGE (psi and kPa)		
30"/0" Vac and 100-0 kPa	BY12VVC4LW	BY12VVC4CW
30"-0-30 psi and 100-0-200 kPa	BY12YCB4LW	BY12YCB4CW
30"-0-60 psi and 100-0-400 kPa	BY12YCC4LW	BY12YCC4CW
30-0-150 psi and 100-0-1000 kPa	BY12YCE4LW	BY12YCE4CW
0-30 psi and 0-200 kPa	BY12YPD4LW	BY12YPD4CW
0-60 psi and 0-400 kPa	BY12YPE4LW	BY12YPE4CW
0-100 psi and 0-700 kPa	BY12YPF4LW	BY12YPF4CW
0-160 psi and 0-1100 kPa	BY12YPG4LW	BY12YPG4CW
0-200 psi and 0-1400 kPa	BY12YPH4LW	BY12YPH4CW
0-300 psi and 0-2100 kPa	BY12YPJ4LW	BY12YPJ4CW
0-600 psi and 0-4200 kPa	BY12YPM4LW	BY12YPM4CW
0-1000 psi and 0-7000 kPa	BY12YPP4LW	BY12YPP4CW
0-2000 psi and 0-14000 kPa	BY12YPS4LW	BY12YPS4CW
0-3000 psi and 0-21000 kPa	BY12YPT4LW	BY12YPT4CW
0-5000 psi and 0-35000 kPa	BY12YPV4LW	BY12YPV4CW
0-10,000 psi and 0-70000 kPa	BY12YPY4LW	BY12YPY4CW

TO ORDER: SPECIFY 10 DIGIT "CATALOG NUMBER" FROM ABOVE TABLE.



CENTER BACK CONNECT

*Center back connected BY12 units can be flush panel mounted with optional U-clamp. Order separately and simply specify "U clamp".

Gauge Size	A	B	C	D	F	G
2½	INCH	2 ¹¹ / ₁₆	1 ¹ / ₄	2 ⁷ / ₁₆	1 ³ / ₁₆	3 ³ / ₈
	MM	68	32	62	21	86

NOTE: ALL DIMENSIONS ARE APPROXIMATE.