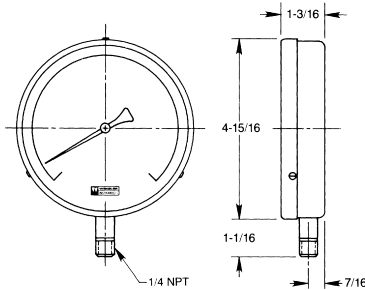




EA14G

DIMENSIONS



1% Accuracy – 4 1/2" Utility Gauges

This gauge is produced especially for large volume users such as the Heating, Ventilating and Air Conditioning field. It is suitable for use with any liquid or gas not corrosive to copper alloys.

SPECIFICATIONS

- Corrosion Resistant Stainless Steel Case and Ring, Plastic Lens.
- Balanced Adjustable Black Pointer.
- Soft soldered phosphor bronze tube with brass socket. Suitable for steam, water, air, oil, gas or any medium not corrosive to copper alloys.
- Phosphor bronze movement.
- Easy to read dial; white background with bold black numerals and graduations, 270° arc.
- 1/4 NPT bottom connection only.

PRESSURE RANGES

CATALOG NO	DIAL RANGES	FIGURE INTERVALS	SMALLEST GRADUATION
EA14A	0-30 psi	5 psi	1/2 psi
EA14B	0-60 psi	10 psi	1 psi
EA14C	0-100 psi	10 psi	1 psi
EA14D	0-160 psi	20 psi	2 psi
EA14E	0-200 psi	20 psi	2 psi
EA14F	0-300 psi	50 psi	5 psi
EA14G	0-500 psi	50 psi	5 psi

VACUUM RANGES

EA14H	30"-0 Hg. Vac	5 in.	1/2 in.
-------	---------------	-------	---------

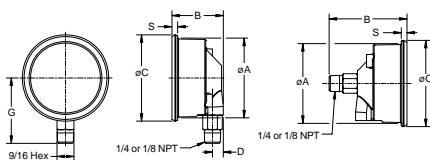
COMPOUND RANGES

EA14J	30"-0-30 psi	10" & 5 psi	1" & 1 psi
EA14K	30"-0-100 psi	15" & 10 psi	5" & 1 psi
EA14L	30"-0-150 psi	30" & 25 psi	5" & 5 psi
EA14M	30"-0-300 psi	30" & 50 psi	5" & 5 psi

TO ORDER: SPECIFY 5 DIGIT "CATALOG NUMBER" FROM ABOVE TABLE.



BK72



øA	B	øC	D	G	S	T
2 ¹⁹ / ₃₂	1 ²³ / ₃₂	2 ¹ / ₈	3 ¹ / ₈	2 ³ / ₁₆	1 ¹³ / ₆₄	2 ¹⁹ / ₃₂
(66)	(44)	(73)	(10)	(55)	(5)	(66)

3-2-3% Accuracy – 2 1/2" Low Pressure Diaphragm Gauges

An inexpensive utility gauge for the broad commercial and industrial market where low pressure measurements are required.

FEATURES

- Sensitive diaphragm capsule for low pressure
- Recalibrator in front of case
- Twist lock plastic window
- ABS impact and corrosion resistant case
- Copper alloy diaphragm
- Brass movement
- Brass socket, 1/4 NPT bottom or back connections available

CATALOG NUMBERS

BOTTOM CONNECTION	BACK CONNECTION	RANGE
BK72A4L	BK72A4R	0/10" WC & 0/6 OZ.
BK72B4L	BK72B4R	0/15" WC & 0/9 OZ.
BK72C4L	BK72C4R	0/30" WC & 0/18 OZ.
BK72D4L	BK72D4R	0/60" WC & 0/35 OZ.
BK72E4L	BK72E4R	0/100" WC & 0/55 OZ.
BK72F4L	BK72F4R	0/160" WC & 0/90 OZ.
BK72G4L	BK72G4R	0/200" WC & 0/110 OZ.
BK72H4L	BK72H4R	0/3 # & 20KPA
BK72J4L	BK72J4R	0/5 # & 35KPA
BK72K4L	BK72K4R	0/10 # & 70KPA

TO ORDER: SPECIFY 7 DIGIT "CATALOG NUMBER" FROM ABOVE TABLE.